

# D/M AUCTIONS

**2 Days-2 Different Locations**  
**Elkhart, Kansas**  
**Friday & Saturday-April 19th-20th 2024**



**DAY 1- FRIDAY APRIL 19TH, 2 P.M. C.T.**  
**LOCATION: 51964 EW 6 RD-KEYES, OK**

FROM:ELKHART KS GO WEST ON HWY 56, 11 MILES TO CIMMARON CO RD NS-53,  
 THEN 1 1/2 MILE NORTH TO CO. RD EW-6 THEN 1 MILE WEST TO SALE SITE

**\*NOTE: START TIME 2 P.M. C.T. SALE WILL ONLY LAST APPROX. 2 HOURS\***

### TRACTORS-BACKHOE ATTACHMENT

MASSEY FERGUSON 2675 TRACTOR, 3PT. 540 P.T.O., DUAL HYD.-18.4-38 DUALS-2164 HRS. ALLIS CHALMERS 170 TRACTOR F.E. LOADER W/ BUCKET  
 AGRI MACHINERY 3PT BACKHOE ATTMT. W/ 2 BUCKETS

### TRUCKS-TRAILERS

1973 FORD F600 SINGLE AXLE TRUCK W/ 16' BED & HOIST  
 WW-16' STOCK TRAILER W/ FULL TOP  
 DIAMOND C-BUMPER PULL 18' TANDEM AXLE F.B. TRAILER W/ DOVETAIL



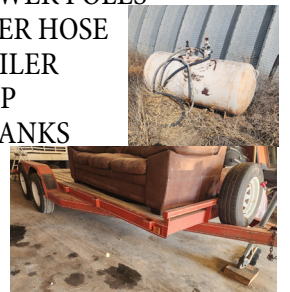
### FARM EQUIPMENT

DRAG TYPE SERVIS MOWER-MODEL G-1310  
 HAMBY 3PT. TRIPLE SQ. BAR-RIPPER  
 LILLISTON 3PT. 8 ROW CULTIVATOR  
 RAC-3PT. 4X4 TOOL BAR W/ SHANKS  
 WALDON 12' FRONT-MOUNT PUSH BLADE  
 HYD. DRAG TYPE 10' BOX SCRAPER  
 DRAG TYPE 16' FLAIL MOWER  
 JD-DOUBLE ROW CRUSTBUSTER  
 3PT. 6' ROTARY MOWER  
 GRAHAM HOEME CHISELS  
 8 TON DRY FERTILIZER SPREADER BOX  
 DIAMOND BAR LISTER & CHISEL  
 2-3 PT. 6 ROW KNIFE SLEDS  
 MISC. TOOL BAR SHANKS-CLAMPS-PICKERS



### NON-CLASSIFIED

3PT. REAR BLADE  
 COUNTY LINE 3PT. POST HOLE DIGGER  
 3PT. BALE SPEAR  
 PICKUP BED TRAILER W/ WIRE ROLLER  
 3PT. SPRAYER W/ 300 GAL. TANK  
 M.F. 3PT. QUICK HITCH  
 TROY BILT REAR TINE TILLER  
 LAWN SPIRIT 36" ZERO TURN RIDING MOWER  
 HYD. LIFT SHOP CHERRY PICKER  
 BAND SAW  
 MAGNA FORCE UPRIGHT AIR COMPRESSOR  
 MANUAL TIRE MACHINE  
 SHOP MADE POLY PIPE TRAILER  
 BALE BUGGY SEVERAL POWER POLES  
 200 GAL. LP TANK W/ FILLER HOSE  
 125 GAL. LP TANK ON TRAILER  
 OLD GASOLINE FUEL PUMP  
 300& 500 GAL. O.H. FUEL TANKS  
 PICKUP LP TANK  
 OTHER MISC. ITEMS



**DAY 2**  
**SATURDAY APRIL 20TH, 10 A.M. C.T.**  
**LOCATION: 1121 SOUTH MUNCY AVE. ELKHART, KANSAS**

### TRACTOR/ATTACHMENTS

CASE IH-DX40-HYDRO TRACTOR W/ CASE LX116 F.E. LOADER W/ BUCKET 1051 HRS.NICE  
 CASE IH-RRX172 3PT. FINISH MOWER  
 JD-503 3PT. ROTARY MOWER  
 3PT. 6' BOX BLADE  
 SKID LOADER FORK LIFT ATTACHMENT

### WELDING TRAILER

BUMPER PULL 2 WHEEL WELDING TRAILER W/ LINCOLN WELD POWER 225G7 WELDER & TOOL BOXES & TORCH BOTTLE RACKS

### GUNS(WILL SELL AT 10 AM)

BROWNING INVECTOR BPS SPECIAL MODEL 28 12 GUAGE-2 3/4 AND 3"-S.N. 2501SPT152  
 REMINGTON MODEL 1100-20 GUAGE SEMI AUTO S.N. N049851K  
 REMINGTON-870 WINGMASTER 12 GUAGE S.N. V254690  
 SAVAGE MODEL 720-16 GUAGE-SEMI AUTO 2 3/4"-S.N. 49989  
 SPRINGFIELD MODEL 67-SERIES C-410-3" PUMP-S.N. B336106  
 REMINGTON MODEL 24-SEMI AUTO 22 LONG RIFLE - S.N. 78809  
 STEVENS-MODEL 87A SEMI AUTO 22 LONG, LR SHORT S.N.- NA.

### SHOP EQUIPMENT

CUMMINS-7"x12" PRECISION MINI LATHE  
 PUMA 110V. UPRIGHT AIR COMPRESSOR  
 PUMA GAS TWIN TANK PRTBL. AIR COMPRESS.  
 LINCOLN 225 ARC WELDER  
 CENTURY 110V WIRE FEED WELDER  
 HOBART PLAZMA CUTTER(110 V)  
 4'X4' HEAVY DUTY WELDING TABLE W/ VISE  
 12T SHOP PRESS  
 DEWALT BENCH GRINDER  
 CHICAGO DRILL PRESS  
 CRAFTSMAN 10" TABLE SAW  
 PRO-TECH BAND SAW  
 CHAIN SAW, LADDERS, RIGID PIPE VISE  
 PIPE STANDS  
 LARGE AMOUNT SMALL ELECTRIC & HAND SHOP TOOLS

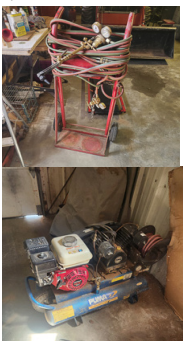


### ANTIQUES/COLLECTIBLES

PEDAL TRACTOR & PEDAL CAR(NEEDS WORK)  
 COUNTER TOP PENN SCALE, CREAM CANS  
 COTTON SCALES, CROCK BUTTER CHURN  
 TOY CARS-SEMI-TRACTOR  
 OTHER COLLECTIBLES

### NON-CLASSIFIED

MURRAY RIDING MOWER W/ 40" DECK  
 J.D.-PUSH MOWER  
 WALK-BEHIND STRING MOWER  
 12 V POST HOLE DIGGER  
 AUTOMOTIVE AC-GUAGES  
 BOTTLE-134A FREON  
 FLOOR JACK, FISHING TACKLE  
 SHOP ORGANIZERS, BBQ GRILL W/ BOTTLE  
 12V YARD SPRAYER, LOTS OF OTHER MISC.



**Sale For:**  
**Phyllis Ford**

**For Info: call Darrell Smith (620)360-0083**

**AUCTIONEER'S NOTE:**  
 Everything Sells AS IS - WHERE IS. Not responsible for theft or accidents. Picture ID required to receive buyer's number. Announcements sale day have precedence over printed advertising. TERMS: Cash or Honorable Check. WE DO ACCEPT CREDIT CARDS.

See more pictures on our Website and Facebook page!!!



SALE CONDUCTED BY  
**D/M AUCTIONS**  
**WWW.DMAUCTIONEERS.COM**

Dan McVey  
 719-529-3579

Marcus Stegman  
 719-529-9038

Like us on Facebook at D/M Auctions

